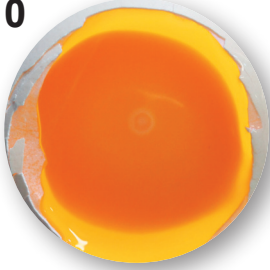


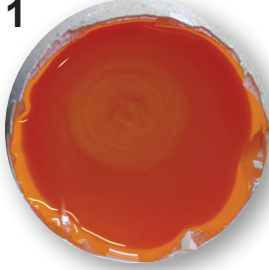
# EMBRYONIC DEVELOPMENT

DAY

0

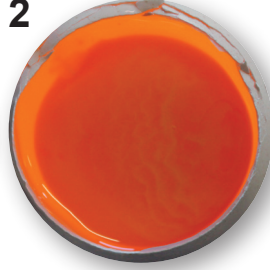


1



Yolk & Germinal Disc

2



Embryo is very sensitive

3



Growing blood vessels,  
heart beat

4



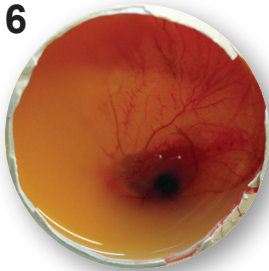
Structures are  
clearly visible

5



Eye and blood vessels  
clearly visible

6



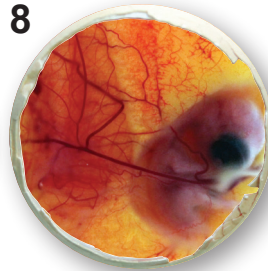
Digits form, beak  
development begins

7



Egg tooth visible,  
developing comb

8



Feather development,  
skeletal formation

9



Mouth opens

10



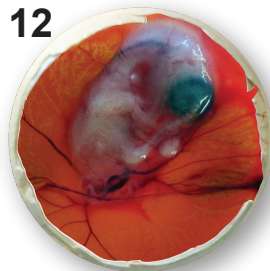
Claw development

11



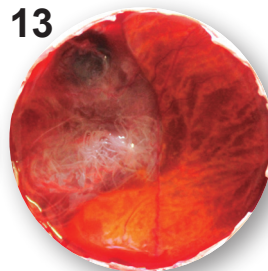
Tail feathers appear

12



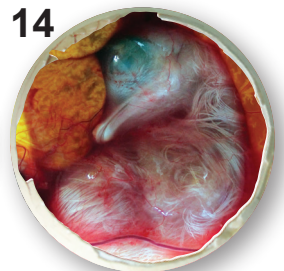
Scales form on feet and legs

13



Eyelids form,  
greater lung growth

14



Head turns towards large  
end of egg

15



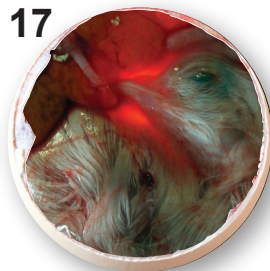
Gut draws into abdomen

16



Feathers cover body

17



Head between legs

18



Embryo fills available  
space, being absorbed

19



Yolk sac draws into  
abdomen

20



Chick fully developed,  
internal pip - external pip

21



Hatch



[www.emka-incubators.com](http://www.emka-incubators.com)